

JAG

Joint Advisory Group
on GI Endoscopy

National Endoscopy Database (NED)

Data process and screenshots
August 2017

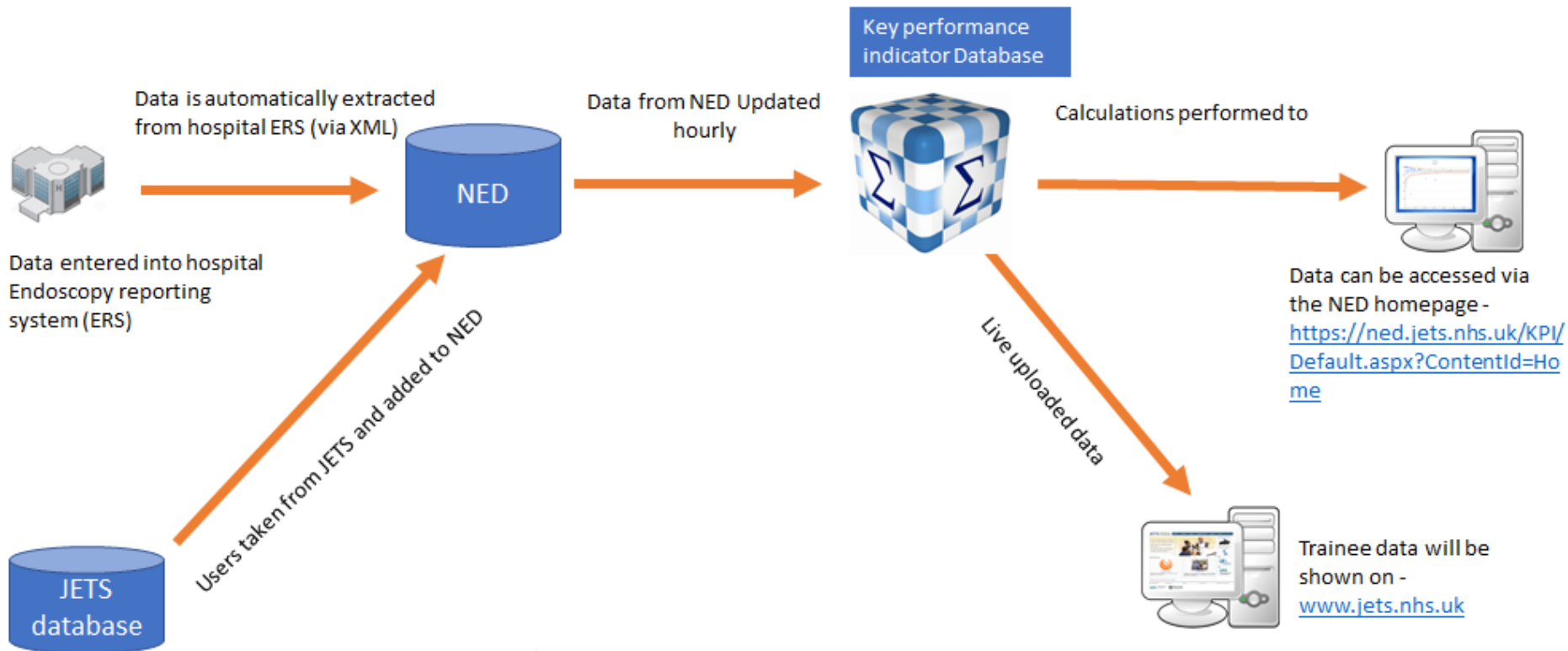
Hosted by

 Royal College of Physicians

JAG

Joint Advisory Group
on GI Endoscopy

NED data process



Hosted by

 Royal College of Physicians



Joint Advisory Group
on GI Endoscopy

Users log in to NED homepage



[Home](#) [KPIs](#) [Resources](#) [Support](#) [Your profile](#)

Current user: 4036001

Welcome to NED the National Endoscopy Database

The National Endoscopy Database (NED) will be populated by data extracted automatically from the endoscopy reporting system (ERS) at each endoscopy service. The NED will make the data available in user friendly outputs for clinicians, services and for research purposes.

The aim of the NED is to:

- Support and enable improved quality assurance in endoscopy
- Enhance JETS (JAG Endoscopy Training System) removing the need for double data-entry for trainees
- Offer potential for research by providing a central store of information

The endoscopy reporting software suppliers involved in the project and their progress towards being NED compliant can be found [in the resources tab](#).

The NED is being developed by JAG with support of several other societies and colleges.



[Logout](#)

Hosted by





Joint Advisory Group
on GI Endoscopy

Individual endoscopist can view all their data in table form

Country → Organisations → Trust → Unit → Endoscopist

KPI Data

Plot KPI Data

Activity Data

Endoscopist

Endoscopist 10625

	KPI	2015	2016	2017
	Procedure Count		178	137
	D2 intubation rate		61.8	95.6
	J manoeuvre rate		96.1	96.4
	Median dose of Pethidine <70			
	Median dose of Pethidine >=70			
	Median dose of Midazolam <70		2	2
	Median dose of Midazolam >=70		2	1.5
	Median dose of Fentanyl <70		75	50
	Median dose of Fentanyl >=70		50	25
	Unsedated Procedures		41.0	41.6
	Greater than recommended dose		2.2	1.5
	Comfort Score		0	0

JAG

Joint Advisory Group
on GI Endoscopy

Endoscopists can also view outputs in various formats e.g. funnel plots

KPI Data

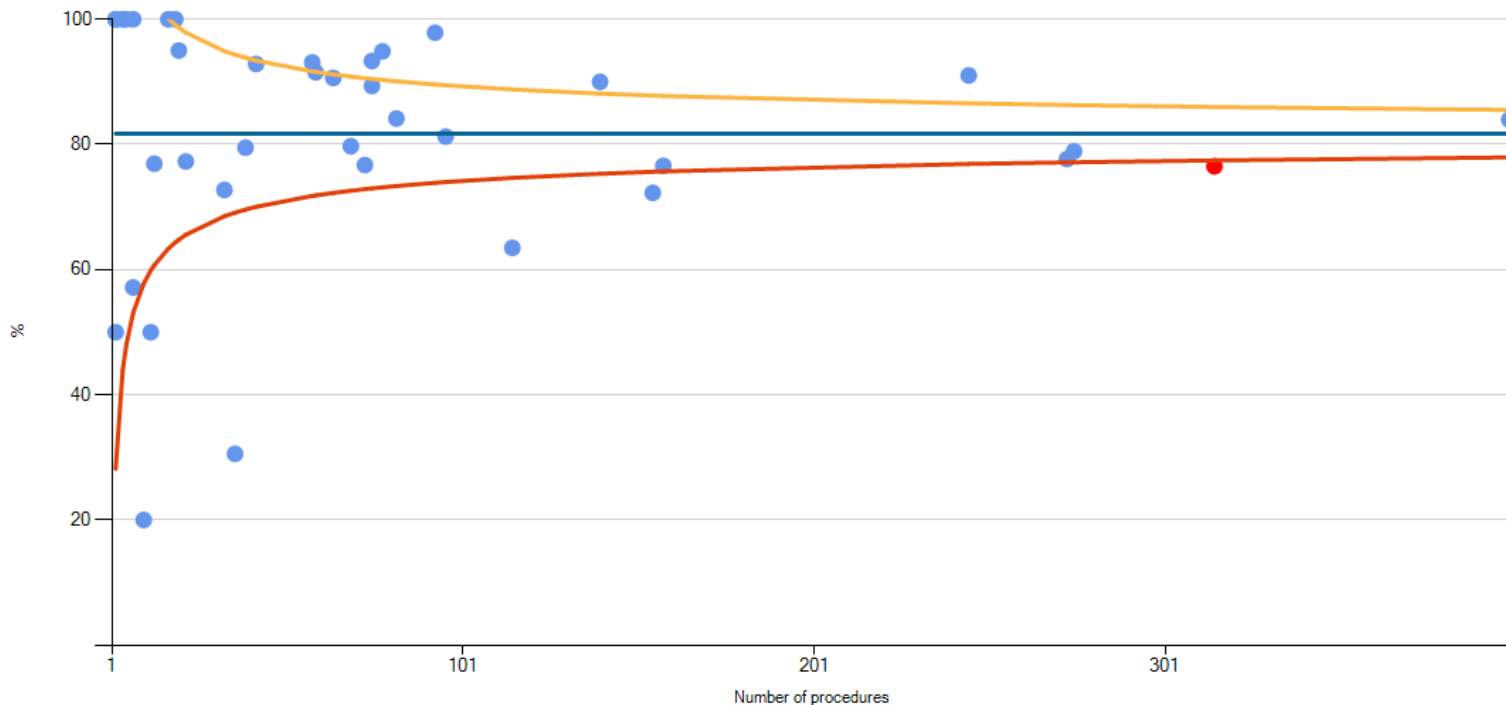
Plot KPI Data

Activity Data

KPI

D2 intubation rate

D2 intubation rate



KPI Data Last Updated: 08/Mar/2017 09:15



Joint Advisory Group
on GI Endoscopy

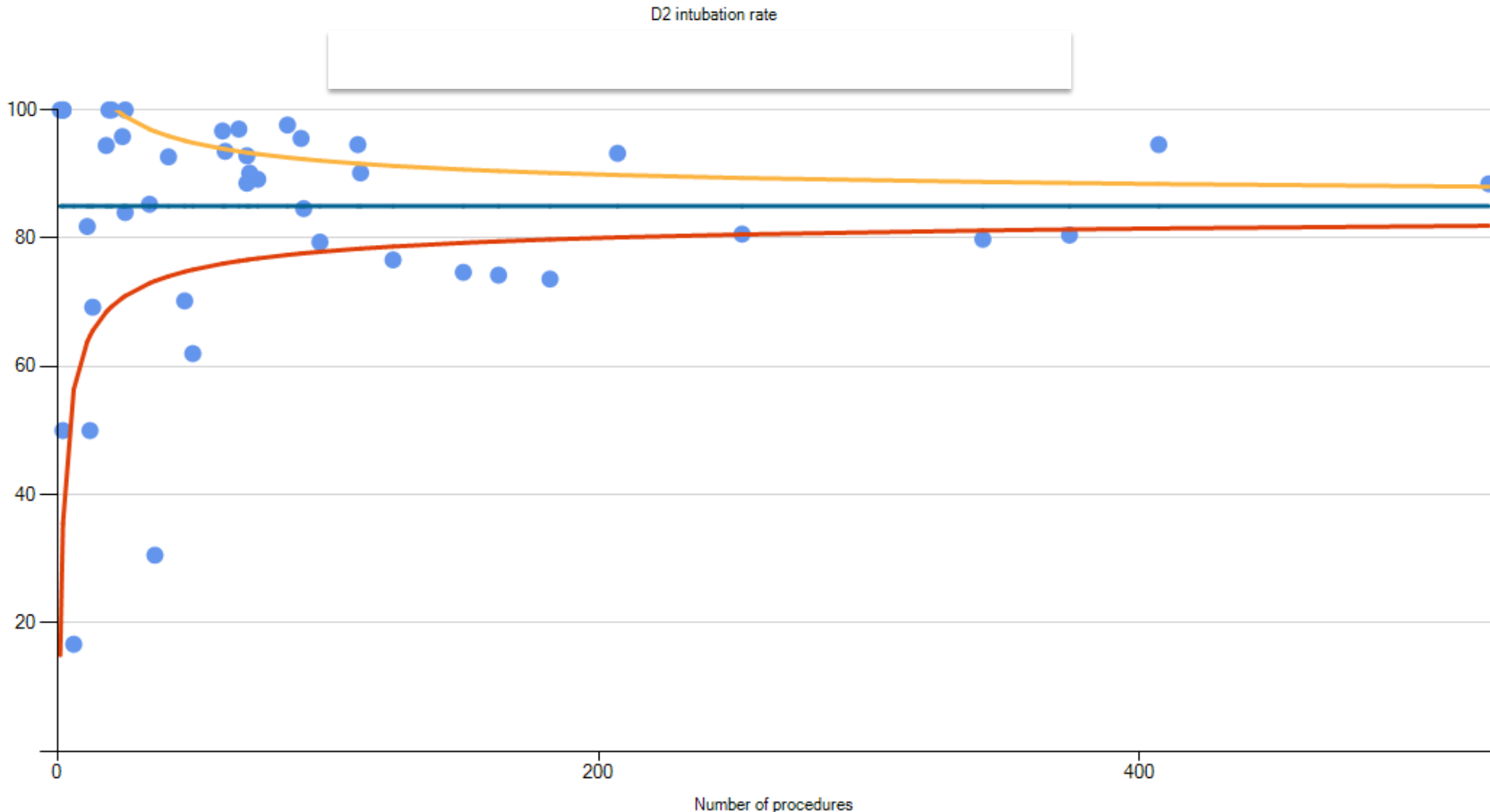
Nominated trust leads will be able to see all data from endoscopist in their service (overall view below)

KPI	Aug 2017	Jul 2017	Jun 2017	May 2017	Apr 2017	Mar 2017	Feb 2017	Jan 2017	Aug 2016	Jul 2016
Procedure Count	62	525	466	494	432	562	465	504	509	163
D2 intubation rate	98.4	93.1	95.5	95.1	94.4	92.9	95.9	95.6	14.7	95.7
J manoeuvre rate	96.8	93.3	95.5	96.0	95.6	93.6	95.1	94.4	94.7	93.3
Median dose of Pethidine <70										
Median dose of Pethidine >=70										
Median dose of Midazolam <70	2	2	2	2	2	2	2	2	2	2
Median dose of Midazolam >=70	2	1.5	1.5	2	2	2	2	1.5	2	2
Median dose of Fentanyl <70	50	50	50	50	50	50	50	50	50	50
Median dose of Fentanyl >=70	37.5	50	25	25	25	31.2	25	50	25	50
Unsedated Procedures	45.2	43.0	42.9	44.3	43.5	42.3	39.8	46.4	44.4	46.0
Greater than recommended dose	1.6	1.3	0.9	0.8	0.7	1.1	0.4	1.0	1.0	1.8
Comfort Score	0	0.4	0.2	0.4	0.9	0.7	0.4	0.2	0.8	0

JAG

Joint Advisory Group
on GI Endoscopy

Leads can then drill down to view specific KPIs





Joint Advisory Group
on GI Endoscopy

For trainees – procedural data will be populate lists on JETS

JETS JAG Endoscopy
Training System

- Home
- Courses ▾
- ePortfolio ▾
- Download Centre
- Stop Impersonating
- Lock

Endoscopy Lists

Click row to open training list data entry page

Add New List

Session Id	Trainee	Trainer	List Type	Date	Status	
14605408c	Matt Rutter		Service	06 Mar 2017	Complete	🔒
14608308c	Matt Rutter		Service	06 Mar 2017	Complete	🔒
14579608s	Matt Rutter		Service	28 Feb 2017	Complete	🔒
14566108c	Matt Rutter		Service	27 Feb 2017	Complete	🔒
14571208c	Matt Rutter		Service	27 Feb 2017	Complete	🔒
14552008c	Matt Rutter		Service	23 Feb 2017	Complete	🔒
14491908s	Matt Rutter		Service	13 Feb 2017	Complete	🔒
14496108c	Matt Rutter		Service	13 Feb 2017	Complete	🔒
14459808c	Matt Rutter		Service	06 Feb 2017	Complete	🔒
14455008c	Matt Rutter		Service	06 Feb 2017	Complete	🔒
14443108c	Matt Rutter		Dedicated	02 Feb 2017	Incomplete	🔒
14440208c	Christopher Wells	Matt Rutter	Dedicated	02 Feb 2017	Incomplete	🔒
14383708c	Matt Rutter		Service	23 Jan 2017	Complete	🔒
14379508s	Matt Rutter		Service	23 Jan 2017	Complete	🔒
14342908c	Matt Rutter		Service	16 Jan 2017	Complete	🔒
14346508s	Yuksel Gercek	Matt Rutter	Dedicated	16 Jan 2017	Incomplete	🔒
14327308c	Matt Rutter		Service	12 Jan 2017	Complete	🔒
14304408c	Matt Rutter		Service	09 Jan 2017	Complete	🔒
14309008c	Matt Rutter		Service	09 Jan 2017	Complete	🔒
14293208c	Matt Rutter		Service	05 Jan 2017	Complete	🔒

Padlock indicates data is uploaded from NED rather than manually added.